

"Raise This Barn"

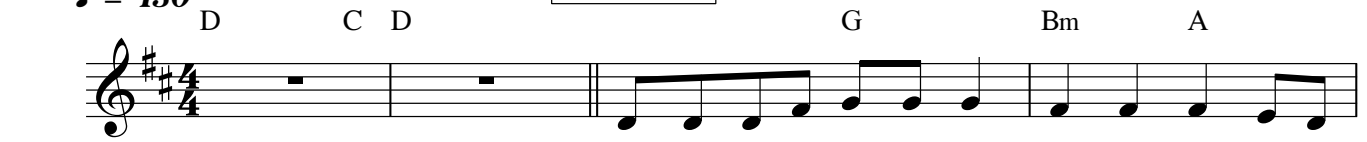
For Series My Little Pony Season 3

lyrics by Cindy Morrow

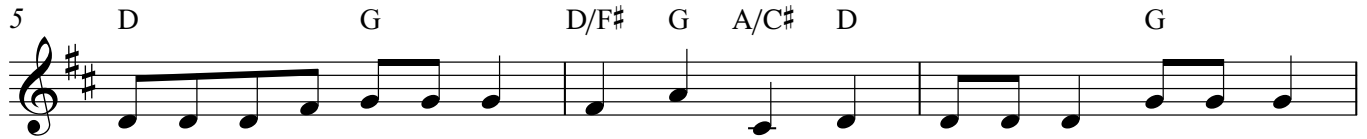
music by Daniel Ingram

♩ = 130

APPLEJACK



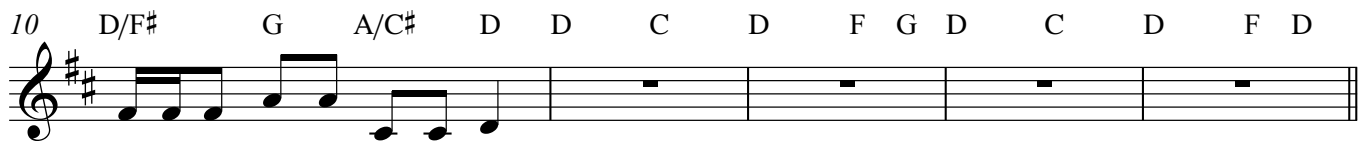
Raise this barn a-raise this barn one two three four to -



ge - ther can we raise this barn one two three four up up up go the beams



hamm-er those joints work in teams turn 'em round quick by the right el - bow



grab a new part-ner here we go!



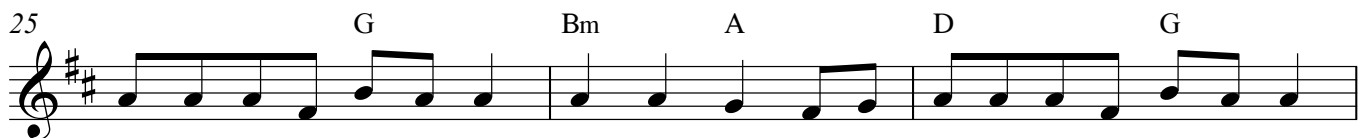
Raise this barn a-raise this barn one two three four to - ge-ther we can raise this barn



one two three four fi-nish the frame re - cy cling wood work-ing hard your do - in' good



turn em' round quick by the right el-bow grab a new part-ner here we go!



Raise this barn a-raise this barn one two three four to - ge-ther we can raise this barn

28 D/F# G A/C# D D G Bm A

53 D G D/F# G A/C# D C

turn 'em round quick by the left el-bow grab a new part-ner here we go

Rit. 56 G A **EVERYPONY** $\text{♩} = 96$ D G Bm A

S. *f* We raised this barn we raised this barn yes we did! To -

A. *f* We raised this barn we raised this barn yes we did! To -

T. *f* We raised this barn we raised this barn yes we did! To -

B. *f* We raised this barn we raised this barn yes we did! To -

59 D G Bm A D , G

S. ge-ther we sure raised this barn yes we__ did! , Be - ing to - ge-ther counts the most we

A. ge-ther we sure raised this barn yes we__ did! , Be - ing to - ge-ther counts the most we

T. ge-ther we sure raised this barn yes we__ did! , Be - ing to - ge-ther counts the most we

B. ge-ther we sure raised this barn yes we__ did! , Be - ing to ge-ther counts the most we

62 Bm A D G(sus2)

S. all came here from coast to coast all we need to strive to be____ is

A. all came here from coast to coast all we need to strive to be____ is

T. all came here from coast to coast all we need to strive to be____ is

B. all came here from coast to coast all we need to strive to be____ is

64 Bm accel. - - - - - ♩ = 130 C D F G D

S. part of the ap-ple fam - i - ly!

A. part of the ap-ple fam - i - ly!

T. part of the ap-ple fam - i - ly!

B. part of the ap-ple fam - i - ly!